

CRETA





There's a reason for all things to be.

What good is the sun, if it doesn't glow.

And the air, if it isn't pure.

What good is water, if it doesn't flow.

Or the earth, if it doesn't move.

Or stars, if they are not bright.

What good is an SUV, if it's not the all-new Creta.

The ultimate SUV.



The ultimate stance.

With a breathtakingly beautiful and edgy design, the all-new Creta has been crafted to command respect. The bold exterior and the new masculine stance will set you apart from every other SUV on the road. No matter where you decide to go, the all-new Creta will help you stay one step ahead on the road.



Signature cascading grille



Trio beam LED headlamps with crescent glow LED DRLs



R17 diamond cut alloys



Welcome function with auto unfold ORVMs & puddle lamps



Twin tip exhaust (turbo only)



LED tail lamps

Other features: Chrome finish outside door handles | Sporty shark fin antenna | Integrated roof rails
Front fog lamps | Aerodynamic rear spoiler | Lightning arch C-pillar



The ultimate view.

Savor the awe inspiring beauty all around when you get in the all-new Creta. The plush new interiors give you the advantage of extra comfort on every ride. Breathe in the wonders of nature and relish exquisite scenic views as you make your way across all-terrains of life.



Driver rear view monitor



Rear seat headrest cushion



Front row ventilated seats



Soothing blue ambient lighting



Electric parking brake with auto hold



Auto healthy air purifier

Other features: Leather wrapped D-cut steering wheel | Leather TGS knob | Automatic headlamps | Smartphone wireless charger | Electro chromic mirror (ECM) | Door scuff plates – metallic | Rear window sunshade | Power driver seat - 8 way | 17.78 cm supervision cluster with digital display | Cruise control | 2-step reclining rear seat 60:40 split rear seat

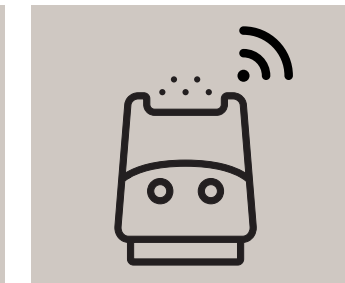


The ultimate connectivity.

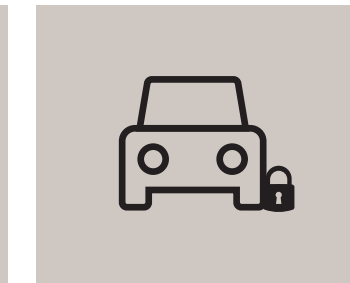
The all-new Creta is equipped with advanced Blue Link featuring the new in-car voice command technology. Now with an app on your smart watch and smartphone you have the power to control your car from anywhere. Stay ahead of the curve with the latest features like remote engine start/stop, destination sharing, climate control and more.



Remote engine start/stop (AT/DCT & MT)



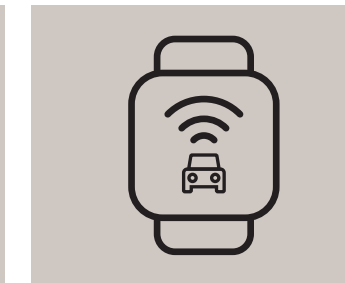
Remote air purifier on*



Stolen vehicle tracking, notification & immobilization*



Monthly health report



Connected car features in smart watch app*



Voice operated open/close sunroof*

BlueLink with 50+ Features
3 Years free Blue Link subscription



For more details on Blue Link, kindly check out the Blue Link brochure on www.hyundai.co.in
*Applicable only with variants supporting Advanced Blue Link technology.
Download Hyundai BlueLink India app from the Android Play Store or the Apple App Store.

The ultimate sound experience.

Immerse yourself and make every drive an Ultimate driving experience with the powerful, precision tuned Bose Premium Sound System (8 speakers).



Bose premium sound system (8 speakers)

The ultimate performance.

With the new 1.4 l petrol, 1.5 l petrol and 1.5 l diesel BS6 engines under the hood, the all-new Creta delivers a power packed performance on every terrain. Be it on the road or off it, the all-new Creta has the dynamism to go the distance.



Traction control mode (snow, sand, mud)



7-speed DCT, 6-speed automatic transmission & IVT



Drive mode select (eco, comfort & sport)



Tyre pressure monitoring system (TPMS)



Paddle shifters

1st in segment

1.5 l MPi petrol engine

BS6

115 Maximum power
ps/6 300rpm

14.7 Maximum torque
kgm/4 500rpm

6-speed manual &
intelligent variable transmission (IVT)



1.5 l U2 CRDi diesel engine

BS6

115 Maximum power
ps/4 000rpm

25.5 Maximum torque
kgm/1 500-2 750rpm

6-speed manual
6-speed automatic transmission



1.4 l Kappa turbo petrol engine

BS6

140 Maximum power
ps/6 000rpm

24.7 Maximum torque
kgm/1 500-3 200rpm

7-speed dual clutch transmission





Six airbags (driver, passenger, side & curtain)
The image is only for airbag reference and car specifications shown may vary from the actual specifications

The ultimate safety.

A strong body structure made with AHSS, the addition of 4 rear parking sensors and 6 airbags, ensure a secure drive for you and your family every time you hit the road.



Electronic stability control (ESC)



Vehicle stability management (VSM)



Rear disc brakes



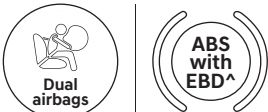
Hill start assist control (HAC)



Strong body structure with AHSS



Rear parking sensors with camera



Standard across all variants

Other features: Rear camera with steering adaptive parking guidelines | Child seat anchor
Speed alert system | Rear defogger with timer | ESS | Impact sensing auto door unlock
Speed sensing auto door lock

^Electronic brakeforce distribution

Interior themes



Two tone black & greige interiors



All black interiors with orange colour pack

Exterior colours



Typhoon silver



Polar white



Red mulberry



Galaxy blue



Lava orange

Turbo variant



Phantom black



Titan grey



Polar white with phantom black roof



Lava orange with phantom black roof



Deep forest (single tone)

Turbo trims available in single tone polar white & phantom black also.

Key features

Variant		E	EX	S	SX	SX(O)
Engine & trim plan						
1.5 l petrol MPI	MT	●	●	●	●	-
	IVT	-	-	-	●	●
1.4 l petrol turbo GDi	DCT	-	-	-	●	●
	MT	●	●	●	●	●
1.5 l diesel CRDi	AT	-	-	-	●	●
Safety						
Rear disc brakes		-	-	-	S	S
Airbags	Driver & passenger	S	S	S	S	S
	Side & curtain	-	-	-	-	S
ABS with EBD		S	S	S	S	S
Electronic stability control (ESC)		-	-	-	S	S
Vehicle stability management control (VSM)		-	-	-	S	S
Hill start assist control (HAC)		-	-	-	S	S
Parking assist	Rear parking sensors	S	S	S	S	S
	Rear camera with steering adaptive parking guidelines	-	-	S	S	S
Day/night inside rear view mirror		S	S	S	S	-
Electro chromic mirror (ECM)		-	-	-	-	S
Front seat belts with pretensioner		S	S	S	S	S
Height adjustable front seatbelts		-	-	-	-	S
Driver & passenger seatbelt reminder		S	S	S	S	S
Emergency stop signal (ESS)		S	S	S	S	S
Speed alert system		S	S	S	S	S
Child seat anchor		-	-	-	S	S
Impact sensing auto door unlock		S	S	S	S	S
Lane change indicator		S	S	S	S	-
Lane change indicator flash adjustment		-	-	-	-	S
Speed sensing auto door lock		S	S	S	S	S
Front fog lamps		-	-	S	S	S
Rear defogger with timer		-	-	S	S	S
Puddle lamps with welcome function		-	-	-	S	S
Immobilizer		S	S	S	S	S
Driver rear view monitor		-	-	S	S	S
Automatic headlamps		-	-	S	S	S
Burglar alarm		-	-	-	S	S
Dual horn		S	S	S	S	S
Central locking		S	S	S	S	S
Exterior						
Wheels	R16 styled steel wheel	-	-	S	-	-
	R17 clean silver alloys	-	-	-	S	-
	R17 grey alloys	-	-	-	DCT	DCT
	R17 diamond cut alloys	-	-	-	-	S
Twin tip exhaust		-	-	-	DCT	DCT
Front & rear skid plate	Silver	-	S	S	S	S
	Matte black	-	-	-	DCT	DCT
A-pillar piano black glossy finish		S	S	S	S	S
B-pillar black-out tape*		S	S	S	S	S
Dual tone exterior		-	-	-	DCT (O)	DCT (O)
Lightening arch C-pillar	Silver	S	S	S	S	S
	Glossy black	-	-	-	DCT (DT)	DCT (DT)
Bi-functional projector headlamps		S	S	S	-	-
Trio beam LED headlamps		-	-	-	S	S
LED positioning lamps		S	S	S	S	S
Crescent glow LED DRL		-	-	-	S	S
LED tail lamps		-	-	S	S	S
Integrated roof rails	Silver	-	-	S	S	S
	Matte black	-	-	-	DCT	DCT
Signature cascading grill	Black	S	S	-	-	-
	Chrome	-	-	S	S	S
	Dark chrome	-	-	-	DCT	DCT
Dual tone bumpers		S	S	S	S	S
Outside door handles		S	S	S	DCT	DCT
ORVM		S	S	S	S	S
Chrome finish outside door handles		-	-	-	S	S
Side sill garnish	Silver	-	S	S	S	S
	Black	-	-	-	DCT	DCT
Antenna	Micro roof	S	-	-	-	-
	Shark fin	-	S	S	S	S
LED turn indicators on outside mirrors		S	S	S	S	S
Aerodynamic rear spoiler		S	S	S	S	S
Interior						
Two tone black & greige interiors		S	S	S	S	S
All black interiors with orange colour pack		-	-	-	DCT	DCT
Orange colour pack	Black fabric seat upholstery	-	-	-	DCT	-
	Black leather* seat upholstery w/ orange piping	-	-	-	-	DCT
	AC vents with orange accent	-	-	-	DCT	DCT
	TGS gaitor boot w/ stitching	-	-	-	DCT	DCT
	Leather* wrapped steering with contrast stitching	-	-	-	DCT	DCT

Variant		E	EX	S	SX	SX(O)
Soothing blue ambient lighting						
Inside door handles (metal finish)		-	-	S	S	S
Leather pack^	Grey & black seat upholstery	-	-	-	-	S
	Steering	-	-	-	S	S
	Door armrest	-	-	-	-	S
Rear seat headrest cushion		-	-	-	S	S
Rear parcel tray		-	-	S	S	S
Door scuff plates - metallic	Front	-	-	-	S	S
	Rear	-	-	-	DCT	S
Rear window sunshade		-	-	S	S	S
D-cut steering wheel		S	S	S	S	S
Sports pedal		-	-	-	DCT	DCT
Comfort and convenience						
Smart panoramic sunroof		-	-	-	S	S
Electric parking brake with auto hold		-	-	-	S*	S
17.78 cm supervision cluster with digital display		-	-	-	-	S
Front row ventilated seats		-	-	-	-	S
Power driver seat - 8 way		-	-	-	-	S
Auto healthy air purifier		-	-	-	S*	S
Drive mode select		-	-	-	S*	S*
Traction control modes		-	-	-	S*	S*
Paddle shifters		-	-	-	S*	S*
Cruise control		-	-	S	S	S
Follow-me-home headlamps		S	S	S	S	S
Keyless entry	Foldable key	S	S	-	-	-
	Smart key w/ push button	-	-	S	S	S
	Manual	S	S	-	-	-
Air conditioning	Automatic temp. control	-	-	S	S	S
	Eco coating	S	S	S	S	S
	Electrically adjustable	S	S	S	S	S
Outside mirror	Auto folding	-	-	-	S	S
Front console armrest with storage		S	S	S	S	S
Rear center armrest with cup holders		-	-	-	S	S
Electric tailgate release		S	S	S	S	S
Rear AC vent		S	S	S	S	S
USB charger	Front	-	S	S	S	S
	Rear	-	-	S	S	S
Front power outlet		S	S	S	S	S
Rear wiper and washer		-	-	S	S	S
Motor driven power steering with tilt function		S	S	S	S	S
Luggage lamp		S	S	S	S	S
Front seat back pockets	Driver	-	-	S	S	S
	Passenger	S	S	S	S	S
Power windows	Front	S	S	S	S	S
	Rear	S	S	S	S	S
Driver side auto up-down		-	-	-	S	S
Room lamp		S	S	S	S	S
Battery saver		S	S	S	S	S
MT shift indicator		S	S	S	S	S
LED map & reading lamps		-	-	-	S	S
Sunglass holder		-	S	S	S	S
MT remote start		-	-	-	-	S
Glove box cooling		-	-	S	S	S
Tyre pressure monitoring system	Lowline	-	S	S	S	-
	Highline	-	-	-	-	S
Seating						
Height adjustable driver seat		S	S	S	S	S
Height adjustable	Front headrest	S	S	S	S	S
	Rear headrest	-	-	-	S	S
60:40 split rear seat		-	-	-	S	S
2-step rear reclining seat		-	-	-	S	S
Infotainment and connectivity						
Infotainment system	20.32 cm touch screen audio	-	S	S	-	-
	26.03 cm HD infotainment with Blue Link	-	-	-	S	S
	Bluetooth	-	S	S	S	S
Smartphone connectivity	Apple CarPlay	-	S	S	S	S
	Android auto	-	S	S	S	S
Steering mounted	Audio control	-	S	S	S	S
	Voice recognition	-	S	S	S	S
Bluetooth handsfree		-	S	S	S	S
Arkamys sound mood		-	S	S	S	-
Bose premium sound system (8 speakers)		-	-	-	-	S
Speaker system	Front & rear door speakers	-	S	S	S	S
	Front tweeters	-	S	S	S	S
	Front central speaker	-	-	-	-	S
	Sub-woofer	-	-	-	-	S
Advanced Blue Link		-	-	-	S	S
Smartphone wireless charger**		-	-	-	S	S
Blue Link integrated smartwatch app		-	-	-	S	S

Technical specifications

Items	1.5 l MPI petrol	1.4 l Kappa turbo GDi petrol	1.5 l U2 CRDi diesel
Dimensions			
Overall length (mm)	4 300		
Overall width (mm)	1 790		
Overall height (mm)	1 635**		
Wheelbase (mm)	2 610		
Fuel tank capacity (l)	50		
Engine			
Configuration	4 cylinders, 16 valves	4 cylinders, 16 valves	4 cylinders, 16 valves
Cam type	DOHC		
Displacement (cc)	1 497	1 353	1 493
Max power (ps/rpm)	115/6 300	140/6 000	115/4 000
Max torque (kgm/rpm)	14.7/4 500	24.7/1 500-3 200	25.5/1 500-2 750
Transmission			
Type	6-speed manual intelligent variable transmission (IVT)	7-speed DCT	6-speed manual 6-speed automatic
Suspension			
Front	McPherson strut with coil spring		
Rear	Coupled torsion beam axle		
Brakes			
Front	Disc		
Rear	Drum (E,EX,S) / Disc (SX,SX(O))		
Tyre			
Size	205 / 65 R16 steel (E,EX)		
	205 / 65 R16 styled wheel (S)		
	215 / 60 R17 alloy (SX,SX(O))		
Spare wheel	205 / 65 R16 (all trims)		
** Works with select smartphones only. *AT, DCT & IVT **with roof rails *leatherette ^Except phantom black colour			

Dimensions



Dealer's Name & Address

Hyundai
Click to Buy

Hyundai
Mobility Membership



Complete peace of mind
3 Years road side assistance (RSA)

For more details,
please consult your Hyundai dealer.

Hyundai Motor India Ltd.

2nd Floor, Corporate One - Baani Building,
Plot No. 5, Commercial Centre, Jasola, New Delhi-110025

Visit us at www.hyundai.co.in or call us at 1800-11-4645 (Toll Free) 098-7356-4645.

^Customer has an option to choose from warranty options: 3 years/unlimited km or 4 years/60 000 km or 5 years/50 000 km. Some of the equipment illustrated or described in this leaflet may not be supplied as standard equipment and may be available at extra cost. • Hyundai Motor India reserves the right to change specifications, schemes and equipment without prior notice. • Hyundai Motor India recommends you to avoid using backcovers for mobiles while charging your phone on the wireless charger • The colour plates shown may vary slightly from the actual colours due to the limitations of the printing process. Please consult your dealer for full information and availability on colours and trim. Terms & conditions apply. *As per customer choice.