




SsangYong Motor Company

12th floor, Poonglim Building 823
Yeoksam-dong, Gangnam-gu
Seoul, 135-784, Republic of Korea
Phone:82-2-3469-2121
Fax:82-2-3469-2285

Official Website:www.smotor.com

Official Facebook  :
www.facebook.com/ssangyongglobal

Official Instagram  :
www.instagram.com/ssangyong_global

Some of the equipment shown in this brochure is optional
and may not be available on all models or in all markets.
All specifications are subject to change without notice.
Please contact your local dealer for the latest information.

NEW **ACTYON**
SPORTS

More Power, More Fun







New Actyon Sports Delivers More Power

A new, more powerful engine, dynamic styling and better fuel efficiency are all yours with this exciting SUT from Ssangyong Motor. New Actyon Sports is equipped to boost your performance at work and at play.

And More Fun

The great utility, comfort and versatility of
New Actyon Sports bring greater enjoyment to your leisure.
That translates into a better quality of life.









This New Look Sets a New Standard

New Actyon Sports lets you stand apart from the crowd in any environment. The sharp front hood character line, hexagonal radiator grille and chic black bezel blend dynamism with refinement.







The Spruced-up Driver's Space Offers Lots of Extras

The new trip computer in the gauge cluster tracks your travel distance, travel time and fuel consumption, and the multimedia system comes with a 7" display, which connects to the rear view camera. The speed-sensitive power steering system self-adjusts the amount of steering assist necessary to enhance driving stability and control at any speed. The steering wheel is heated and features a natural leather cover, and a carbon pattern adds refinement to the gearshift lever.

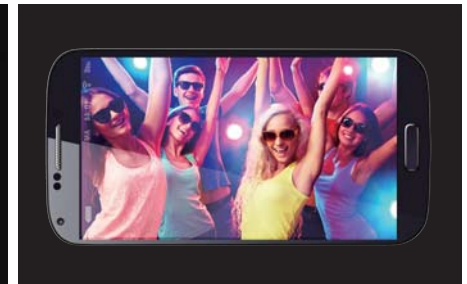
Multimedia system with 7" display



Rear view camera



Bluetooth hands-free and audio functions



HDMI terminal for a portable device, connectable to the 7" colour display



Trip computer in the center of the LED cluster



Carbon pattern on and around the gearshift lever



Heated and tilting power steering wheel with leather cover

Traveling is More Pleasurable in the New Cabin

Fresh features have been installed inside New Actyon Sports to enhance the comfort and enjoyment of the driver and passengers. Specifically, a Bluetooth switch has been added to the steering column to allow hands-free operation. The seats are all heated front and rear, and a greater selection of seat covers is available, including natural leather or woven fabric all around and ventilated mesh for the front. The driver's seat can be adjusted eight ways to conform to the individual body type, while the front passenger's seat is four-way adjustable.



Front ventilated seat



Full auto air conditioner



Heated seats in front and rear



Multi-adjustable seats in front



Enhanced recline angle in rear









The New Engine is More Powerful and Economical

Improvements in the engine and transmission have enhanced the performance of New Actyon Sports, meaning still more value to you.



178ps(130.9kW) 2,157cc
2.2L e-XDi diesel engine



6-speed manual with diesel engines



6-speed automatic (diesel 2.2L) /
5-speed automatic (diesel 2.0L)



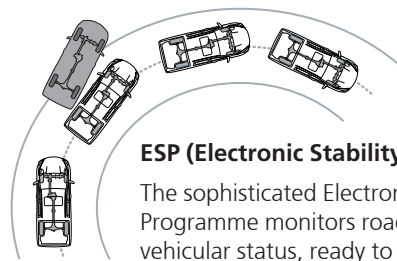
155ps(114kW) 1,988cc
2.0L e-XDi diesel engine



149.5ps(110kW) 2,295cc
2.3L petrol engine

Safety and Driveability Go Hand in Hand

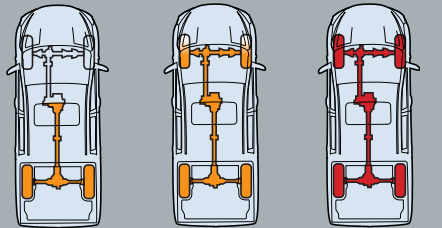
The ability to venture forth both confidently and safely on any terrain under all conditions defines the true SUT. And New Actyon Sports performs this role exceptionally well.



ESP (Electronic Stability Programme)

The sophisticated Electronic Stability Programme monitors road conditions and vehicular status, ready to adjust engine output and brake force automatically should the driver be in danger of losing control on wet or icy surfaces or in sharp turns at high speed.

Part-time 4WD



2WD high-gear mode 4WD high-gear mode 4WD low-gear mode



Airbags in front

The driver's seat and front passenger's seat are each equipped with their own front airbag.



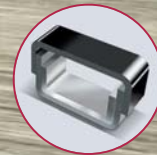
TPMS

The TPMS measures tyre pressure constantly and when abnormality is detected issues an alert to the driver that reflects the degree of urgency.





Double-wishbone suspension in front combined with 5-link suspension in the rear



An ultra-rigid steel frame with triple-layer construction for maximum passive safety protection



Utility is Maximized by Versatility, Capacity and Power

New Actyon Sports has one of the most powerful engines in its class and is capable of towing loads as heavy as 2,300 kilograms. The cargo bed measures two square meters, and with the tailgate down, you get enough room to carry motorbikes, mountain bikes, skis, camping gear and other long or bulky objects.

And this rugged off-road performer is sure to get you to your destination comfortably and safely, when on the job or on vacation.





Style, Comfort and Convenience Extras

Take a good look inside and outside New Actyon Sports.

You will be pleasantly surprised at all the features you can discover that enhance appearance and performance.

Combined, these extras make this SUT safer, more pleasant and easier to use.



Sun roof



Hood character line



Powered and heated outside mirrors



Bulb daytime running lamp



Safety power window on driver's side



Bed inner cover



Mud guard



Backup warning system



Sunglasses holder



Multi-sensors



Map pocket on doors



Ticket holder



Rear centre armrest cup holder



Cup and stationary holders



Automatic climate control



Remote controller kit



USB & Aux. port



USB & HDMI port



Trip computer



Multifunction control switches



2-Din audio system with MP3 and CD players



Sun-visors with vanity mirror and illumination



Electrochromic rearview mirror



Headlamp leveling device



Cabin lamps



Power outlets



Battery saver



Visual vehicle identification number plate
(EU region only)



18" Black Wheels



18" Alloy wheels



16" Alloy wheels



16" Steel wheels

Seat Covers



Ventilated leather seat cover



Leather seat cover



TPU cover
(Thermoplastic Polyurethane)



Fabric seat cover

Interior Colours



Available Exterior Colours



Indian Red (RAJ)



Canyon Brown (OAQ)



Marble Grey (ACM)



Fine Silver (SAF)



Grand White (WAA)



Space Black (LAK)

FEATURES LIST

MECHANICAL

178ps 2.2L e-XDi diesel engine (Euro 6 emission)
155ps 2.0L e-XDi diesel engine
149.5ps 2.3L petrol engine
Part-time 4WD
6-speed manual transmission with diesel engine
5-speed automatic transmission with diesel 2.0L engine
6-speed automatic transmission with diesel 2.2L engine
5-speed manual transmission with petrol engine
Double-wishbone front suspension system with coil springs
Five-link rear suspension with coil springs
Hydraulic power steering
Speed sensitive power steering

SAFETY

Tyre Pressure Monitoring System (TPMS)
Ultra-rigid frame for greater strength, less vibration and noise
Door impact beams for optimal protection from side collisions
Airbags for driver and front passenger
Seatbelt load limiters and pre-tensioners
4-channel anti-lock braking system
Electronic Stability Program (ESP) with ARP and HSA
Disc brakes on all 4 wheels (diesel version)
Front ventilated disc brakes
Backup warning system with 3-stage alarm
Door courtesy lamps
Front and rear fog lamps
Electrochromic rearview mirror
Immobiliser system
Childproof safety lock
Speed sensitive door lock
Collapsible steering column
ISO-FIX and tether anchorage for baby car seat
Seatbelt reminder for driver and passenger (1st row seats)
Bulb daytime running lamps (Europe, Chile, Russia, Kazakstan)
LED daytime running lamps (Europe, Chile, Russia)
Safety power window on driver's side
Visual VIN plate

APPEARANCE

Deck cover
Roof Rack
16" Steel wheels with 225/75 tyres
16" Alloy wheels with 225/75 tyres
18" Alloy wheels with 255/60 tyres (No flange)
18" Alloy wheels with 255/60 tyres (Black, No flange)
Full-sized spare tyre
New chrome and black glossy radiator grille
Black bezel headlamps
All-around tinted glass
Exterior door handles in body colour
Power sunroof
Waist line molding - highlighted by a stainless steel insert
Pole antenna
LED side repeaters
Rubber blade wiper
Inside door handle - silver paint

CLIMATE CONTROL

Manual air conditioning
Fully automatic air conditioning with temperature sensor and outside temperature gauge
Rear heating duct
PTC heater with diesel engine

SEATS

Appealing sporty woven fabric seat covers
TPU (Thermoplastic Polyurethane) seat covers
Luxurious leather seat covers
Heated front seats with 3 temperature settings
Heated rear seat
Ventilated front seats with 3 temperature settings
2nd row seats with folding centre armrest with cup holder
Front sliding headrest
Height adjustable driver's seat

8-way power driver's seat
4-way power front passenger's seat

CONVENIENCE

Cruise control system
Luxurious leather knob for gear shift lever
Luxurious leather cover for steering wheel
Carbon pattern grain accented on centre fascia
Floor mats
Dual remote keyless system (REKES) - folding type (Diesel)
2-Din audio system with mp3 and CD players (with RDS for EU region)
7" high-resolution touch screen with audio streaming and link to rearview camera and smart phone
USB & Aux. port / USB & HDMI port
4 speakers
Bluetooth hands-free
Audio remote control switch on steering wheel
Auto light control and rain sensing wipers
Compartment under rear seat
Electric folding outside mirrors
Heated and adjustable outside mirrors
Battery saver
Illumination color - orange
Heated windshield glass
Headlamp leveling device
Trip computer
Bed inner cover
Shopping bag hook
Heated rear glass with timer to defrost
Spray washer nozzle
Deluxe mobile illuminated ashtray
Deluxe overhead console in easy reach
Digital clock on dashboard
Handy centre storage console
Cup and stationary holder in the console
Sun-visors with vanity mirror and illumination
Heated steering wheel

* Some of features may be optional or not be available according to market. Please, contact your local dealer for the exact details regarding vehicles sold in your area.

TECHNICAL DATA

ENGINE			DIESEL 2.2 (W/CDPF)				DIESEL 2.0 (W/CDPF)				PETROL 2.3		
EMISSION			EURO 6				EURO 5				EURO 4		
DRIVEN WHEELS			2WD		PART-TIME 4WD		2WD		PART-TIME 4WD		2WD	PART-TIME 4WD	
TRANSMISSION			6MT	6AT	6MT	6AT	6MT	5AT	6MT	5AT	5MT		
DIMENSIONS	Overall length	mm	4,990				4,990						
	Overall width	mm	1,910				1,910						
	Overall height	mm	1,780 (with roof rail : 1,790)				1,780 (with roof rail : 1,790)						
	Tread	Front	mm	1,570				1,570					
		Rear	mm	1,570				1,570					
	Overhang	Front	mm	860				860					
		Rear	mm	1,070				1,070					
	Wheelbase	mm	3,060				3,060						
	Approach angle	degree	25.0				25.0						
	Departure angle	degree	25.0				25.0						
	Ramp angle	degree	20.0				20.0						
	Min. ground clearance	Front	mm	188				188					
Rear		mm	212				212						
Min. turning radius	m	5.95				5.95							
WEIGHT	Gross vehicle weight	kg	2,640		2,740		2,640		2,740		2,600	2,700	
	Kerb weight	kg	1,875~1,939	1,910~1,974	1,992~2,055	1,995~2,059	1,873~1,913	1,895~1,935	1,982~2,022	1,995~2,035	1,835~1,876	1,944~1,984	
	Maximum cargo loading	kg	326~390	291~355	310~373	306~370	352~392	330~370	343~383	330~370	349~390	341~381	
	Gross trailer weight	Braked	kg	2,300				2,300				1,800	
Unbraked		kg	750				750				750		
ENGINE	Fuel	-	Diesel				Diesel				Petrol		
	Capacity	cc	2,157				1,998				2,295		
	Bore X stroke	mm	86.2 X 92.4				86.2 X 85.6				90.2 X 88.4		
	Compression ratio	-	15.5:1				16.5:1				10.0:1		
	Number of cylinders	-	4 in-line										
PERFORMANCE	Max. power	kW/rpm	130.9/4,000				114/3,400~4,000				110/5,500		
		ps/rpm	178/4,000				155/3,400~4,000				149.5/5,500		
	Max. torque	Nm/rpm	400/1,400~2,800				360/1,500~2,800				214/3,500~4,600		
		kg·m/rpm	40.7/1,400~2,800				36.7/1,500~2,800				21.8/3,500~4,600		
Max. speed	km/h	174				163				161			
FUEL CONSUMPTION	CO ₂ (combined)	g/km	182	186	199	202	196	195	199	199	288	293	
	Combined	L/100km	6.9	7.1	7.6	7.7	7.4	7.4	7.5	7.6	12.2	12.4	
	Urban	L/100km	8.7	8.8	9.7	9.9	9.5	9.1	9.6	9.2	16.1	16.3	
	Extra urban	L/100km	5.9	6.1	6.3	6.5	6.2	6.4	6.4	6.6	9.9	10.0	

DIMENSIONS



* The fuel economy can vary according to road conditions or driver's habits.

* The technical data can vary slightly by regional certification requirements or sales specifications.