

2017 HYUNDAI

# TUCSON





2017 HYUNDAI TUCSON

## THE SECRET TO STANDING OUT FROM THE CROWD? BE OUTSTANDING.

---

If you've been looking at premium Crossover Utility Vehicles, you know how many choices there are. So what's the smart choice? Ask the experts at *MotorWeek*, TV's longest-running automotive series. They do something you probably can't do: Drive practically every car on the market to evaluate its price, practicality, performance and fuel efficiency. After all of that scrutiny, which is *MotorWeek*'s 2016 Driver's Choice Award winner for the Best Small Utility? Hyundai Tucson.

Get to know Tucson for yourself, and you'll discover there's much more beneath the fluid lines, athletic stance and modern LED headlight and taillight designs. An arsenal of advanced safety features like optional Automatic Emergency Braking with Pedestrian Detection<sup>1</sup> and Blind Spot Detection with Lane Change Assist<sup>2</sup> are onboard, helping Tucson earn an NHTSA 5-Star Overall Safety rating and Tucson Limited earn a 2016 IIHS Top Safety Pick+ rating.<sup>3</sup>

No matter which Tucson you choose – SE, Eco, Sport or Limited – start by pulling the driver's door handle. Hyundai engineers tuned the acoustic signature of the door latches to create a smooth feeling and solid sound. Meticulous attention to detail is evident all across the wide design instrument panel and spacious interior.

Tucson Limited's 8" touchscreen is your portal to advanced navigation and a 315-Watt Infinity® Premium Audio System with Clari-Fi™ Music Restoration Technology. Smartphone integration with technologies like Android Auto™ is also built in, making it easy to access your music, messages, maps and more with simple voice commands.<sup>4</sup>

Want to stand out from the crowd? Step into Tucson.

<sup>1</sup> Available on Tucson Limited. <sup>2</sup> Standard on Tucson Sport and Limited models. <sup>3</sup> Government 5-Star Safety Ratings are part of the National Highway Traffic Safety Administration's (NHTSA) New Car Assessment Program (safercar.gov). 2016 TOP SAFETY PICK+ rating applies to vehicles equipped with available Automatic Emergency Braking and is based on Insurance Institute for Highway Safety's good ratings in the small overlap front, moderate overlap front, side, roof strength and head restraint tests, as well as an advanced or superior rating for front crash prevention. For details, visit [iihs.org](http://iihs.org). <sup>4</sup> Standard on Tucson Limited. Android Auto works with smartphones running Android™ 5.0 or higher. Android, Android Auto and other marks are trademarks of Google Inc. <sup>5</sup> View U.S. News Best Cars at [usnews.com/cars](http://usnews.com/cars).





2016 Tucson named Best Compact SUV for the Money U.S. News & World Report<sup>5</sup>







<sup>1</sup>EPA estimate for Tucson SE with Front Wheel Drive is for comparison only. Mileage may vary. Your actual mileage will vary with options, driving conditions, driving habits and your vehicle's condition. <sup>2</sup> Available on Tucson SE, standard on Eco, Sport and Limited models.

TUCSON LIMITED with Ultimate Package in Coliseum Gray





## REFINED PERFORMANCE

# BETTER ENGINEERING STARTS WITH BETTER ENGINES.

How satisfying your vehicle feels behind the wheel depends on literally thousands of factors. But it starts with the engine. To make sure Tucson sends your satisfaction meter racing, we offer a choice of two advanced, highly efficient powertrains.

Tucson Eco, Sport and Limited come standard with a 175-horsepower, 1.6L turbo engine that's both potent and fuel-efficient (thanks in part to a segment-first 7-speed EcoShift® Dual Clutch Transmission). On Tucson SE, a 164-horsepower, 2.0L direct-injected 4-cylinder engine and a 6-speed automatic transmission with SHIFTRONIC® manual shifting controls combine to achieve an EPA-estimated 30 MPG highway rating.<sup>1</sup>

See those available 19" alloy wheels? That's where Tucson's power meets the road. To help improve traction in slippery road conditions, there's an available electronic All Wheel Drive system. And to help you get a grip when driving on steep inclines, Tucson comes standard with Hillstart Assist Control and Downhill Brake Control.

Now go for that drive: The smooth, quiet ride you're enjoying is the result of a rigid body structure laced with high-strength steel and bonded with the same structural adhesives used in aerospace. Hyundai engineers also optimized the suspension geometry for a perfect balance of handling agility and supple ride.



ALL  
WHEEL  
DRIVE

ACTIVE  
CORNERING  
CONTROL

19"  
ALLOY  
WHEELS

## A MODE TO SATISFY YOUR MOOD

A feature called Drive Mode Select tailors the engine, transmission and steering response to suit your preference.<sup>2</sup> At the press of a button, Tucson Eco, Sport and Limited models precisely alter their performance to your choice of Normal or Sport modes (Tucson SE adds an Eco mode as well). Drive Mode Select syncs with Tucson's Active Cornering Control, Hyundai's advanced next-generation All Wheel Drive system.

## HAVE YOU HAD YOUR TURBO TODAY?

A spirited 1.6L 4-cylinder turbocharged engine comes standard on Eco, Sport and Limited models. Its advanced design uses Gasoline Direct Injection to make the most of every drop of fuel. A light and compact turbine means the engine's 175 horsepower and 195 lb-ft of torque respond quickly. It's frugal, too: Tucson Eco delivers up to an EPA-estimated 32 MPG on the highway.<sup>1</sup>

## 7 SPEEDS, QUICKER SHIFTS

To make the most of our turbo engine's power and efficiency, it's mated to the segment's first 7-speed transmission. And not just any 7-speed, but an EcoShift® Dual Clutch Transmission. Dual clutches work in tandem to create instantaneous gear shifts and boost fuel economy through improved efficiency.

## CORNER LIKE YOU'RE ON RAILS

To optimize traction and improve lateral stability while cornering, Tucson is equipped with an available Active Cornering Control AWD system. It uses an engineering advance known as torque vectoring to transfer power between the front and rear wheels – and even side-to-side to each wheel – to ensure the engine's power is always being sent to the wheels with the most grip.





LUXURY & TECHNOLOGY

## DESIGNED WITH THE MOST VALUABLE CARGO OF ALL IN MIND: YOU.

---

Sure, Tucson has the versatility you expect from a Crossover Utility Vehicle. But we designed it with the belief that you expect more from a premium CUV than flexible cargo solutions. You expect more room. And more luxury. Which is why Tucson's roomy interior is finished with premium materials like YES Essentials® stain- and odor-resistant fabric for all cloth interiors. Tucson Limited ups the ante with soft, supple leather for its available heated/ventilated front seats and heated rear seats.

As the Tucson driver, you sit in an 8-way power seat with lumbar support.<sup>1</sup> You're kept comfortable in a cabin that uses a filtration system to constantly cleanse the air. Rear air conditioning vents help backseat passengers stay cool. And this should make you feel like the center of attention: An available full-length panoramic sunroof that shines the light on you.

Apple CarPlay™ support lets you bring your digital life along for the ride.<sup>2</sup> Make calls, listen to Apple Music, send messages and get directions using Siri voice commands or your 8" touchscreen. Tucson also supports Android Auto, which syncs with your compatible Android phone and features best-in-class speech technology for accessing Google Maps,™ Google Play™ Music and more. Popular music apps like Pandora,® Spotify® and iHeartRadio are supported for both platforms.

<sup>1</sup>Optional on Tucson SE, standard on Eco, Sport and Limited models. <sup>2</sup>Standard on Tucson Limited. Apple CarPlay works with iPhone 5s, iPhone 5c, iPhone 5 and later models running the latest version of iOS 7 and above. Apple is a registered trademark of Apple Inc. <sup>3</sup>Blue Link Connected Care includes one year of the Blue Link Connected Care Package and requires an active Blue Link subscription. One-year term starts from the new vehicle date of first use and is available for new vehicle purchases and leases based upon terms and conditions on the Blue Link subscription enrollment pages. Cellular and GPS coverage is required. Features, specifications, and fees vary by subscription plan and are subject to change. For more on details and limitations, visit [Hyundaiusa.com](http://Hyundaiusa.com) or your authorized Hyundai dealer.







MONTHLY VEHICLE HEALTH REPORTS

SOS EMERGENCY ASSISTANCE



AUTOMATIC COLLISION NOTIFICATION

SERVICE LINK

## BLUE LINK® CONNECTED CARE

### REST ASSURED, WE'VE GOT YOUR BACK

Complimentary for your first year, Blue Link Connected Care delivers peace of mind for Tucson Limited owners.<sup>3</sup> This comprehensive safety and car care package lets you schedule a service appointment with your Hyundai dealer from the driver's seat and monitors your Tucson's maintenance with Monthly Vehicle Health Reports. In the event of an accident, no matter where you are, trained operators are standing by to provide 24/7 assistance and emergency help.

### NOW SCREENING: PREMIUM 8" NAV

Tucson Limited comes standard with a hi-resolution 8" touchscreen. A split-screen display makes it easy to see at a glance what you need to know from multiple sources, whether that's the navigation system or new Infinity® premium audio system with Clari-Fi Music Restoration Technology that returns clarity and majesty to digital music files. With 315-Watt power and 8 speakers, it'll bring to life all the songs available to you through Apple CarPlay, Android Auto or Pandora.

### CAN WE GIVE YOU A LIFT?

With Tucson's innovative hands-free smart liftgate, there's no awkward waving of one foot under the bumper. Simply stand within 3 feet of the rear liftgate for 3 seconds with the key fob in your pocket or purse, and it opens automatically. The liftgate also includes a convenient height-adjustable setting.

### PUTTING THE FUN IN FUNCTIONAL

Tucson's tailgate opens wide for easy access to a dual level cargo area designed to help you extract maximum enjoyment from your journeys. The 60/40 split-folding rear seats offer versatile passenger and storage options with up to 61.9 cubic feet of space. A retractable cargo cover is available to help conceal the items you stow inside.









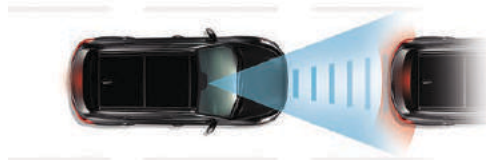
## TUCSON INNOVATION

# THE PATH FROM 'WHAT IF' TO WINDOW STICKER HAS NEVER BEEN SHORTER.

Take a look at the window sticker on the 2017 Tucson. It's filled with features that were merely 'what if' ideas a short time ago. What if you could use a smartwatch to start and stop your vehicle's engine while you're paying the bill at a restaurant? The Blue Link smartwatch companion app now lets you do that, and a lot more. You can turn on your Tucson's climate control system, unlock and lock the doors, and use Car Finder to locate your Tucson in a crowded parking lot.<sup>1</sup>

What if your vehicle was embedded with radar sensors and cameras that detect other vehicles around your Tucson and alert you to help avert potential collisions? Tucson Limited's got you covered – front, back and all around – using technologies like Automatic Emergency Braking with Pedestrian Detection<sup>2</sup> and Blind Spot Detection with Lane Change Assist and Rear Cross-traffic Alert.<sup>3</sup> A standard rearview camera? Available rear parking sensors? It's all there.

And what if, when you're Googling places to go, the directions were sent directly from your smartphone to your Tucson's nav system? Destination Send-to-Car by Google™ is at your service.



## AUTOMATIC EMERGENCY BRAKING

## LANE DEPARTURE WARNING

### WHAT CAN'T BLUE LINK DO?

Get to know all that Blue Link can do, and it becomes one of those things you wonder how you ever lived without. Tucson's Blue Link Remote package gives you the convenience of remote smartwatch capabilities, plus a range of extra security features. Want to keep tabs on your teen driver? Check out the Geo-fence, Speed Alert and Curfew Alert functions. Somebody swipe your Tucson? The Blue Link Remote package also has Stolen Vehicle Recovery, Stolen Vehicle Slow Down and Vehicle Immobilization capabilities. Our Blue Link Guidance package offers Destination Search Powered by Google™ – use voice commands to find an address, point of interest or category quickly and easily.<sup>4</sup>

### NIGHTTIME IS LIGHT TIME

Tucson Limited's automatic LED headlights aren't only stylish – they offer increased illumination for greater nighttime visibility while drawing less power than traditional lighting. Opt for the available HID headlights, and Hyundai's Dynamic Bending Light follows the turns of your steering wheel for improved visibility when cornering.

### EXTRA SET OF EYES

To help take some of the stress out of rush hours, Tucson's Blind Spot Detection flashes a warning icon in your side mirror when a vehicle's in your blind side zone. Lane Change Assist measures the closing speed of an approaching vehicle in the adjacent lane to determine if changing lanes is safe. If not, the driver is alerted with an audible and visual warning.

### STOP ON A DIME AUTOMATICALLY

Available on Tucson Limited, Automatic Emergency Braking (AEB) with Pedestrian Detection uses a camera and radar sensor to help determine if other vehicles or people are present in the path of your Tucson. If so, the driver is alerted by an audible signal. If the driver doesn't brake, AEB intervenes with emergency braking to help prevent a collision.





## EXTERIOR COLORS



Molten Silver



Coliseum Gray



Ruby Wine



Mojave Sand



Sedona Sunset



Caribbean Blue



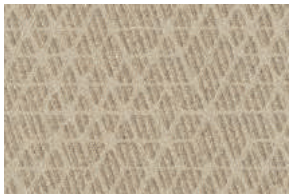
Dazzling White



Black Noir Pearl

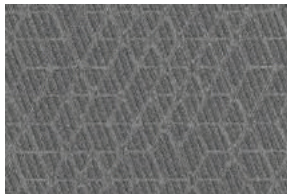
## INTERIOR COLORS

Beige Cloth



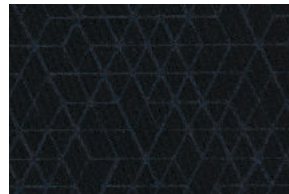
SE / Eco / Sport

Gray Cloth



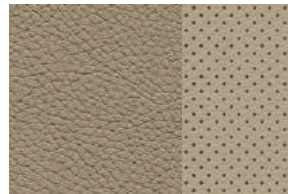
SE / Eco / Sport

Black Cloth



SE / Eco / Sport

Beige Leather



Limited

Black Leather



Limited

## WHEELS



17" Alloy Wheel  
SE / Eco

19" Alloy Wheel  
Sport / Limited





2017

## TUCSON SE



### KEY STANDARD FEATURES

- 164-hp, 2.0L GDI 4-cylinder engine
- 6-speed automatic transmission with SHIFTRONIC® controls
- Motor Driven Power Steering
- 17" alloy wheels
- Driver blind spot mirror
- Remote keyless entry system with alarm
- Automatic on/off projector headlights
- Bodycolor power and heated side mirrors
- Bodycolor rear spoiler with LED brake lights
- Rear and variable intermittent front windshield wipers
- Solar front and privacy rear glass
- Windshield washer fluid level sensor
- Power door locks and windows with driver's auto-down
- Tilt-and-telescopic steering wheel with audio, phone and cruise controls
- Air conditioning with cabin air filter
- Illuminated ignition key cylinder
- 6-way adjustable driver seat including height adjustment
- Adjustable head restraints for all seating positions

- Center console with storage compartment and armrest tray
- 60/40 split-folding rear seats with recline function and center armrest
- YES Essentials® stain-resistant cloth seats (beige, gray and black)
- Maplights with sunglass holder, dome lamp and cargo area light
- 3.5" LCD multi-information display
- AM/FM/SiriusXM/CD/MP3 audio system with 6 speakers
- 5" color touchscreen audio display with rearview camera
- iPod®/USB auxiliary input jacks
- 3 x 12-volt DC power outlets
- Front, side and side-curtain airbags with rollover sensors
- Vehicle Stability Management
- Electronic Stability Control
- Traction Control System
- Anti-lock Braking System with Electronic Brake-force Distribution
- Hillstart Assist Control and Downhill Brake Control
- Tire Pressure Monitoring System with individual tire indicators
- Compact spare tire

### POPULAR EQUIPMENT PACKAGE | SE Standard Features plus:

- + Drive Mode Select
- + Power driver seat with lumbar support
- + LED headlight accents
- + LED Daytime Running Lights
- + Front foglights
- + Roof side rails and premium side sills
- + Power windows with driver's auto-down/up
- + Dual illuminated vanity mirrors
- + Glove-compartment light

### CLASS-LEADING ADVANCED SAFETY



Blind Spot Detection with Lane Change Assist



Rearview Camera



Automatic Emergency Braking with Pedestrian Detection

2017

## TUCSON ECO



### SE Popular Equipment Package plus:

- + 175-hp, 1.6L turbocharged GDI 4-cylinder engine
- + 7-speed EcoShift® Dual Clutch Transmission
- + Premium front and rear fascias

- + Chrome-tipped dual exhaust
- + Side mirrors with turn signal indicators
- + Floor console-mounted rear vents
- + "Eco" liftgate badging

2017

## TUCSON SPORT



### ECO Standard Features plus:

- + 19" alloy wheels
- + Hands-free smart liftgate with auto open and adjustable height setting
- + Proximity Key entry with push button start
- + Illuminated exterior front door handles

- + Blind Spot Detection with Rear Cross-traffic Alert
- + Lane Change Assist
- + Heated front seats
- + Leather-wrapped steering wheel and shift knob
- + Premium door panels
- + "Sport 1.6T" liftgate badging

### EXTERIOR DIMENSIONS

	TUCSON
• Wheelbase	105.1 in
• Overall Length	176.2 in
• Overall Width	72.8 in
• Overall Height (with/without roof rails)	65.0/64.8 in
• Tread Width, front/rear (17" wheels)	63.3/63.8 in
• Tread Width, front/rear (19" wheels)	63.1/63.6 in
• Roof Rails Load Capacity	220 lbs

### INTERIOR DIMENSIONS

	TUCSON
• Head Room, front/rear	39.6/39.2 in
• Legroom, front/rear	41.5/38.2 in
• Shoulder Room, front/rear	57.1/55.5 in
• Hip Room, front/rear	55.6/54.5 in
• Passenger Volume (without panoramic sunroof)	102.2 cu ft
• Cargo Capacity (rear seats up/rear seats folded down)	31.0/61.9 cu ft
• Total Interior Volume (without panoramic sunroof)	133.2 cu ft

2017

## TUCSON LIMITED



### SPORT Standard Features plus:

- + LED headlights and taillights
- + Leather seating surfaces
- + Power passenger seat
- + Chrome accent front grille and exterior door handles
- + 8" touchscreen navigation system
- + Android Auto™ support
- + Apple CarPlay™ support
- + Infinity® Premium Audio System with 8 speakers and Clari-Fi™ Music Restoration Technology
- *Deletes CD Player*

- + Blue Link® Connected Car System
- + Dual automatic temperature control with CleanAir Ionizer and auto defogger
- + Premium side and door sill plates
- + Premium instrument panel and driver console side panel with window switches
- + Auto-dimming rearview mirror with compass and HomeLink®
- + Shark-fin antenna
- + "Limited 1.6T" liftgate badging

### ULTIMATE PACKAGE | LIMITED Standard Features plus:

- + HID headlights with Dynamic Bending Light
- + Lane Departure Warning
- + Automatic Emergency Braking with Pedestrian Detection
- + Rear parking sensors
- + Power tilt-and-slide panoramic sunroof
- + Front and rear LED maplights
- + Electroluminescent Gauge Cluster with 4.2" color LCD multi-info display
- + Ventilated front seats
- + Heated rear seats



All Wheel Drive models include AWD liftgate badging and windshield wiper de-icer

### EPA MILEAGE ESTIMATES

(City/Highway/Combined)

	SE	Eco	Sport/Limited
• Horsepower	164 HP	175 HP	175 HP
• Front Wheel Drive	23/30/26	26/32/28	25/30/27
• All Wheel Drive	21/26/23	25/30/27	24/28/25
• Transmission Type	6-speed A/T	7-speed DCT	7-speed DCT
• Fuel Tank Capacity	16.4 gal	16.4 gal	16.4 gal
• EPA Classification	Small SUV	Small SUV	Small SUV

HYUNDAI

Assurance

HYUNDAIASSURANCE.COM

Our commitment to Hyundai owners doesn't end with the transfer of keys. Wherever the road takes you, we've got your back with Hyundai Assurance, an umbrella of services and benefits that includes America's Best Warranty, 24/7 Roadside Assistance, innovative safety and car care features...and more.



## AMERICA'S BEST WARRANTY

POWERTRAIN  
LIMITED WARRANTY

**10 YEARS**  
100,000 MILES

NEW VEHICLE  
LIMITED WARRANTY

**5 YEARS**  
60,000 MILES

ANTI-PERFORATION  
WARRANTY

**7 YEARS**  
UNLIMITED MILES

24/7 ROADSIDE  
ASSISTANCE

**5 YEARS**  
UNLIMITED MILES



See dealer for LIMITED WARRANTY details. Fuel economy estimated by EPA for comparison only. Mileage may vary. While the information contained in this brochure was correct at the time of printing, specifications and equipment can change. Feature comparisons based on competitor information available at the time of printing. No warranty or guarantee is being extended in this brochure, and Hyundai reserves the right to change product specifications and equipment at any time without incurring obligations. Some vehicles are shown with optional equipment. Specifications apply to U.S. vehicles only. Please contact your Hyundai dealer for current vehicle specifications. As part of Hyundai's commitment to a responsible environment, this brochure was printed using paper certified by the Forest Stewardship Council.® FSC® certification helps ensure that the highest social and environmental standards are met in the making of the paper we use, contributing to conservation, responsible management, and community-level benefits for people near the forests.

